

“Island” metal panels for suspended radiant ceilings

Datasheet
0997EN 05/2024



GK-V Ultra is an “island” metal ceiling system, intended for heating and cooling of open spaces such as offices, halls, commercial spaces, airports, schools.

The standard panel is 1350x675 mm and features a concealed supporting “canopy”.

The support system provides state-of-the-art planarity and horizontality of the suspended ceiling.

Panels are fitted to the structure support profiles through a convenient snap-on system which also helps to easily remove them when needed.

The support structure is light, robust and quick to install.

The metallic “island” is more efficient compared to classic metal suspended ceilings as its “open” configuration generates a natural convective effect which enhances the panel thermal performance and prevents any type of discomfort.

➤ Versions and product codes

SERIES	PRODUCT CODE	PANEL FINISH	COLOR	TYPE	ACTIVATION	PANEL DIMENSIONS [mm]	EMPTY WEIGHT [kg]
GK-V Ultra	K135CX101	Perforated R2516	RAL9016	Active, central panel	Type C100 4 diffusers	1350 x 675	12,2
	K135CX102	Perforated R2516	RAL9016	Active, right-side panel	Type C100 4 diffusers	1350 x 675	12,2
	K135CX103	Perforated R2516	RAL9016	Active, left-side panel	Type C100 4 diffusers	1350 x 675	12,2

NOTE. The panels are customizable based on the technical and architectural requirements of the system.

NOTE. The difference between central, left-side and right-side panels is represented by the perforated surface of the panel itself. See p. 3 for more information.

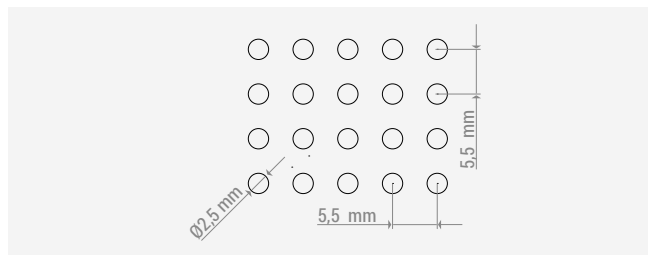
Technical data

Technical characteristics

- Galvanized steel sheet panel RAL9016 powder coated, 0,8 mm thickness and non-woven fabric layer for enhanced soundabsorption
- Activation type: C100 with 4 anodized aluminum thermal diffusers
- Copper pipe coil Ø 16 mm
- Anchoring to concealed "canopy" structure
- Reaction to fire class: 0
- Hydraulic circuit Kv: 2,02
- Panel water content: 0,8 l

Standard perforation

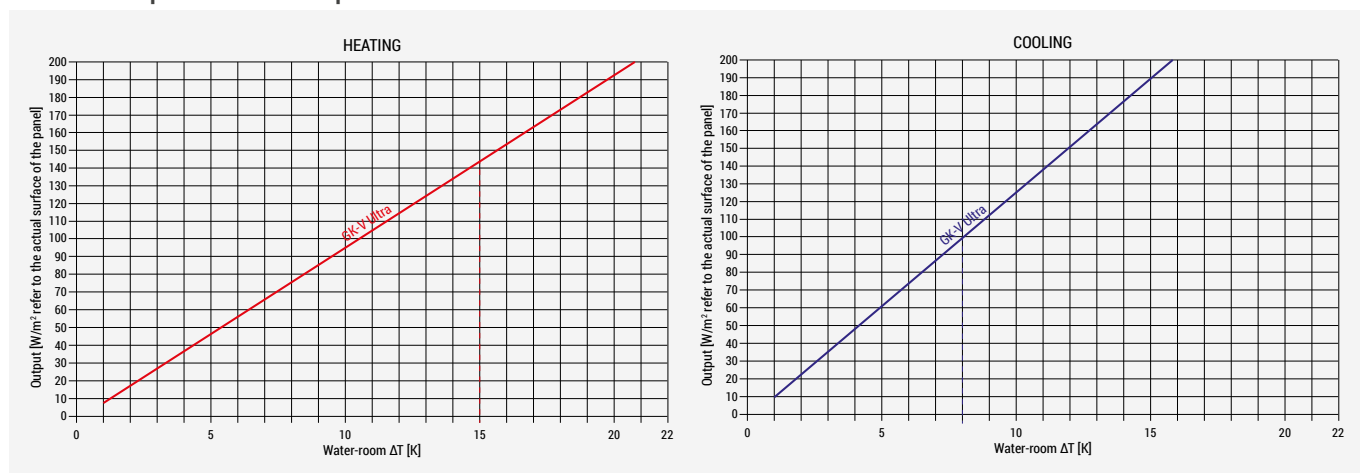
The panel features Ø 2,5 mm holes on the entire surface, except for the 22 mm-wide perimetric zone (16 % hole percentage).



Thermal outputs according to EN standards referred to active area

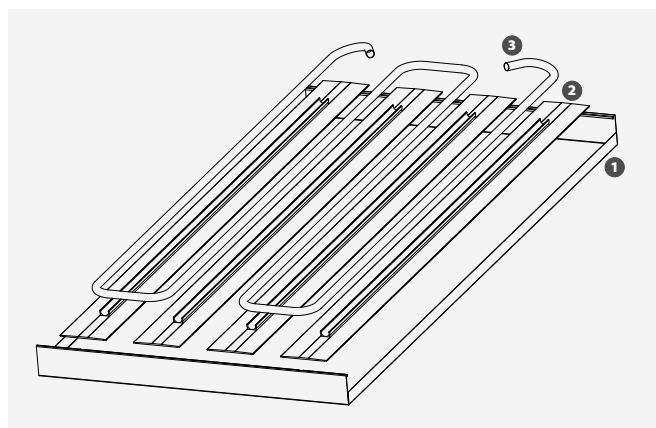
HEATING (ACCORDING TO EN14037)	COOLING (ACCORDING TO EN14240)
150 W/m ² with water-room ΔT 15 K	124 W/m ² with water-room ΔT 8 K

Thermal outputs referred to panel actual surface



NOTE. Outputs according to thermostatic chamber tests. Outputs refer to the panel actual surface.

Components



LEGEND

- 1 Galvanized steel panel with glued TNT sheet
- 2 100x1320 mm aluminum thermal diffusers
- 3 Ø 16 mm copper pipe coil

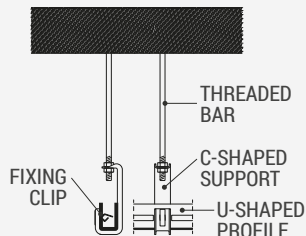
➤ Connection and distribution system

Anchoring to the concealed "canopy" structure

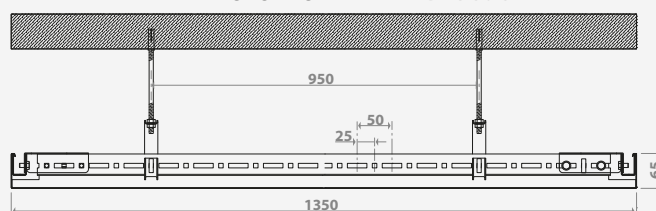
The support structure consists of threaded rods anchored to the ceiling and bearing special U-shaped profiles through C-shaped supports. These profiles are connected to the supports through fitting clips (note: the long part of the spring must face upward to be easily removed for inspection).

The panels are fitted to the U-shaped profiles by hand and do not require additional screws and bolts.

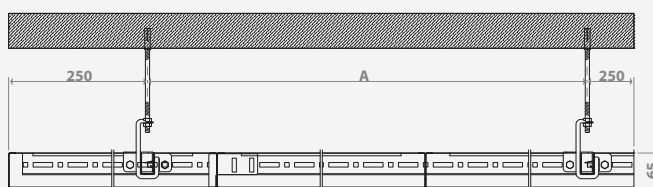
This type of support system is convenient, quick to install and makes the panels easy to remove.



SHORT SIDE VIEW Dimensions in mm

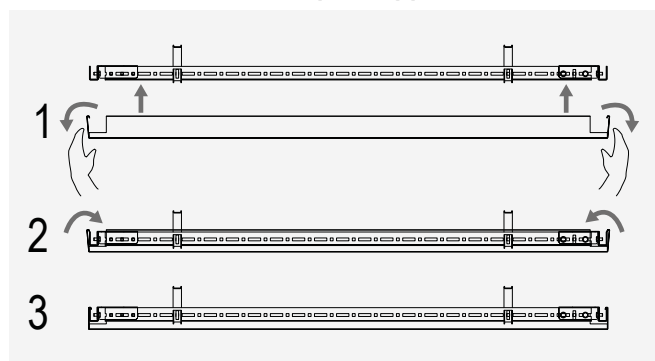


LONG SIDE VIEW Dimensions in mm

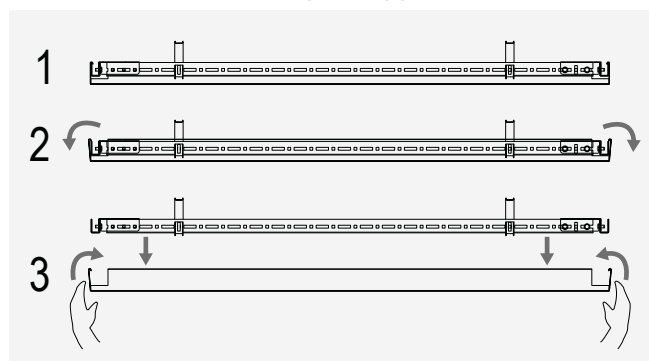


NUMBER OF SYSTEM PANELS	3 PANELS	4 PANELS	5 PANELS
A [mm]	1525 (2 threaded bars)	2200 (2 threaded bars)	1488 (3 threaded bars)

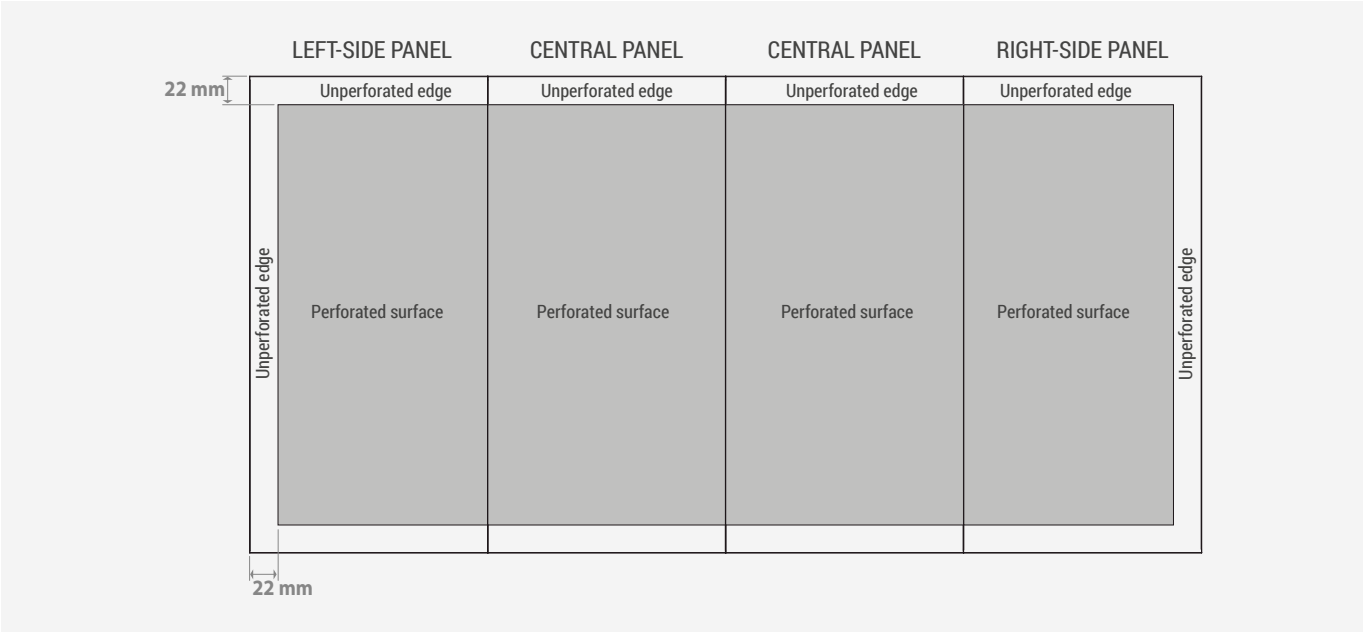
Panel installation on U-shaped supports



Panel removal from U-shaped supports



Bottom view: difference between central, left-side and right-side panel



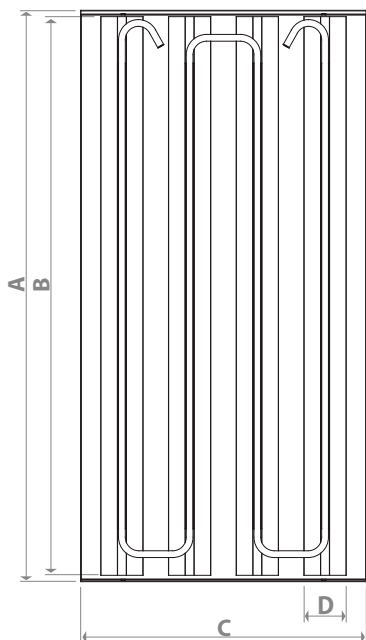
► Hydraulic connections



Panel-panel and panel-pipe connections must be carried out using pre-assembled kits K85RS, consisting of flexible pipes impermeable to oxygen, a stainless steel mesh sleeve and 16 mm RS push-fittings.

⚠ WARNING. RS push-fittings must be connected only to hard-drawn or annealed copper pipes.

➤ Dimensions



SERIES	PRODUCT CODE	TYPE	A [mm]	B [mm]	C [mm]	D [mm]
GK-V Ultra	K135CX101	Active, central panel	1350	1320	675	100
	K135CX102	Active, right-side panel	1350	1320	675	100
	K135CX103	Active, left-side panel	1350	1320	675	100

➤ Product specifications

K135CX101

Central active island panel consisting of galvanized steel sheet RAL9016 powder coated, and non-woven fabric layer applied for enhanced soundabsorption, installation on concealed "canopy" structure. Activation with four 100x1320 mm anodized aluminum thermal diffusers. Hydraulic circuit with 16 mm copper pipe coil. Open for inspection by rotating the panel on its short side. Panel dimensions 1350x675 mm. Panel thickness: 0,8 mm.

K135CX102

Right-side active island panel consisting of galvanized steel sheet RAL9016 powder coated, and non-woven fabric layer applied for enhanced soundabsorption, installation on concealed "canopy" structure. Activation with four 100x1320 mm anodized aluminum thermal diffusers. Hydraulic circuit with 16 mm copper pipe coil. Open for inspection by rotating the panel on its short side. Panel dimensions 1350x675 mm. Panel thickness: 0,8 mm.

K135CX103

Left-side active island panel consisting of galvanized steel sheet RAL9016 powder coated, and non-woven fabric layer applied for enhanced soundabsorption, installation on concealed "canopy" structure. Activation with four 100x1320 mm anodized aluminum thermal diffusers. Hydraulic circuit with 16 mm copper pipe coil. Open for inspection by rotating the panel on its short side. Panel dimensions 1350x675 mm. Panel thickness: 0,8 mm.

⚠ Safety Warning. Installation, commissioning and periodical maintenance of the product must be carried out by qualified operators in compliance with national regulations and/or local standards. A qualified installer must take all required measures, including use of Individual Protection Devices, for his and others' safety. An improper installation may damage people, animals or objects towards which Giacomini S.p.A. may not be held liable.

♻ Package Disposal. Carton boxes: paper recycling. Plastic bags and bubble wrap: plastic recycling.

ℹ Additional information. For more information, go to giacomini.com or contact our technical assistance service. This document provides only general indications. Giacomini S.p.A. may change at any time, without notice and for technical or commercial reasons, the items included herewith. The information included in this technical sheet do not exempt the user from strictly complying with the rules and good practice standards in force.

♻ Product Disposal. Do not dispose of product as municipal waste at the end of its life cycle. Dispose of product at a special recycling platform managed by local authorities or at retailers providing this type of service.