



INSTALLATION AND MAINTENANCE MANUAL

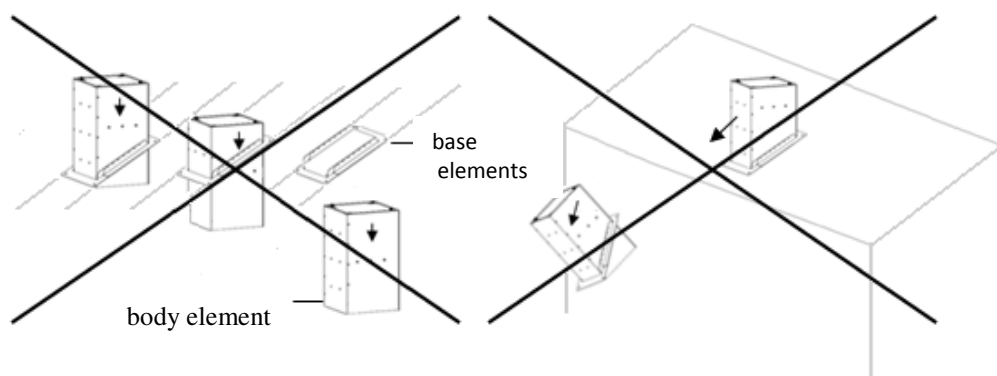
ROOF STAND TYPE: RS(A)-RI 300-1100

Venture Industries Sp. z o.o. is not responsible for any damage caused by improper use of the product and reserves the right to modify this document without informing the user.

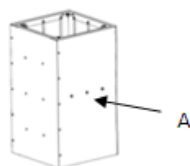
Read this manual before installation of the roof stand.

GENERAL INFORMATION

- The product is dedicated for assembling by user. It need to be mounted on a flat surface and used with fans dedicated by roof stand manufacturer.
- Product is made from galvanized steel sheet with mineral wool insulation (obtained from glass fibers).
- Product is designated for mounting outside after proper insulation. It is forbidden to use roof stand in area of viscous substances, substances that cause abrasion, chemically aggressive compounds, explosive atmospheres.
- Product is designated for transport clean air and air with low degree of contamination through it inside. It is forbidden to transport through roof stand: liquids, viscous substances, substances with high humidity, substances that cause abrasion, chemically aggressive compounds, explosive atmospheres. Prevent from deposit of dirt on insulation and silencers (RSA-RI). Roof stand cannot be used as part of smoke control system. Use product with temperature above 60°C need to be consulted with manufacturer.
- Product can be installed, maintained, dismantled only by qualified and authorized personnel, in accordance with current laws and regulation in force in country of use.
- Product need to be transported and stored in original packaging, protected from weather conditions and from harmful substances. It cannot be transported and stored in areas with fertilizers, chlorinated lime, acids and other aggressive chemicals. During transport and storage product need to be protected against mechanical damage, including from crushing. Conveying equipments and product support structures must be selected proper to the product and fan weight and ensure that it would not move. Do not approach the hanging load during transport.
- Product may have edges touching which may cause injury. We recommend the use of relevant protective gloves.
- **In case of improper installation and use, product defect it may disconnect from it mounting surface (eg. roof) and it body can disconnect with base elements - this risk need to be considered. The quality, and strenght of the connection of base elements and body element (selection of proper rivets) and entire roof stand with mounting surface is the responsibility of the user.**



- Product is equipped with bolts and washers (A) on both sides of body element. It should not be removed. When loose / not tightened - it must be tightened.

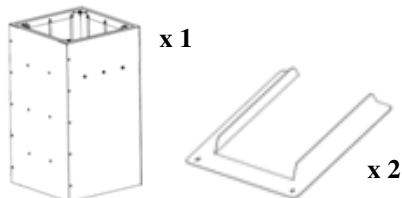


- Product need to be subject of regular periodic review and maintenance. Particular attention need to be paid to the occurrence of corrosion, the connection status of base elements and body element, sate of the screws and washers (A). To clean use slightly damp delicate material. It is prohibited to use detergents, liquids under pressure and tools that may scratch the unit surface.
- In case of damage of zinc layer - product must be protected against corrosion.

INSTALLATION

During installation follow next steps:

1. Check that you have all the elements of roof stand

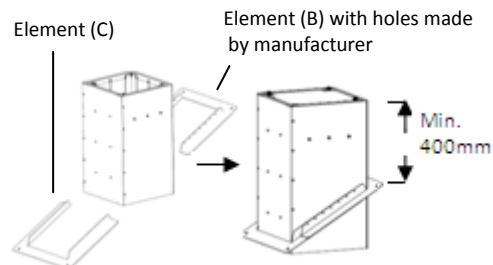


1 x body
2 x base element

2. Measure the roof angle

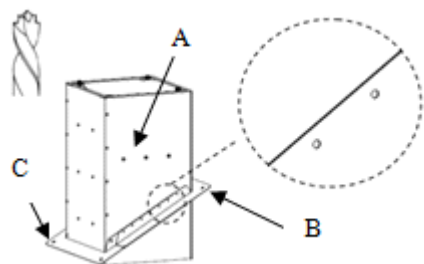


3. Fit the base elements and body under measured angle.



- Base element need to be placed below screws A.
- Upper part of body need to be minimum 400mm above roof.

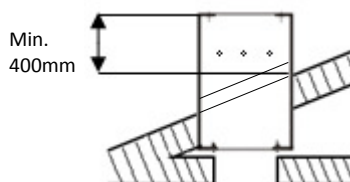
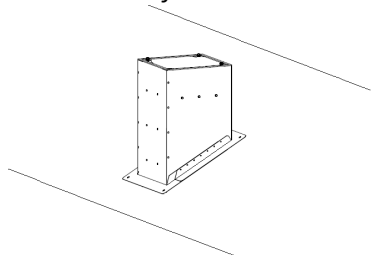
4. Drill holes in the body and base elements.



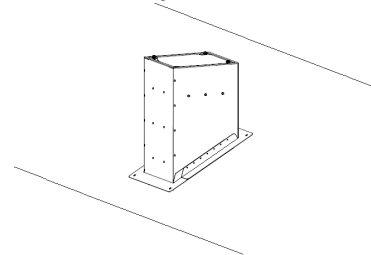
- The holes need to be drilled on the side of screws (A).
- Make additional holes in base element (C) and body in a way that guarantees regular location of holes on all connection side of body and base elements.

5. Connect the base elements with body with use of tight (leakproof) rivets

6. Mount roof stand on the roof

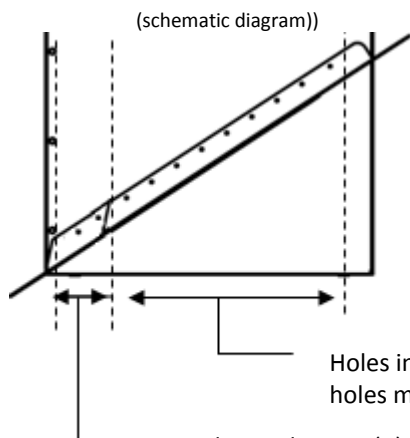


7. Insulate the roof stand.



- Roof stand needs additional insulation as prevention against water getting inside the installation (including of tightening and insulating screws and washers (A))

8. Mount the fan on the roof stand.



Holes in element (C) and body made axially to holes made by manufacturer in element (B).

Holes in element (C) and body made analogically (distances, diameter) to holes made by manufacturer in element (B)

- Be cerful - o not damage roof stand elements.

